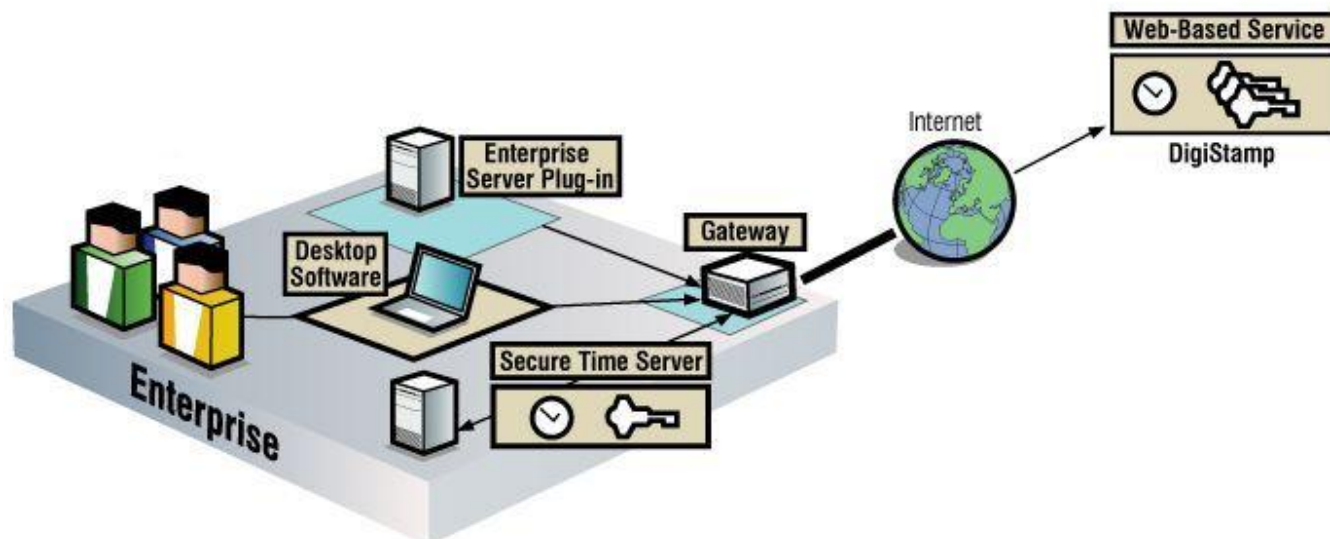


DigiStamp set of services as described on their web site at:
<http://www.digistamp.com/apiOver.htm>

Enterprise Enablers – DigiStamp Products and Services



SecureTime Component	DigiStamp Products and Services
	New Enterprise Plug-in 2009-10-25 Sign and time stamp a PDF file. Customers primarily in the European Union who are using time stamps in their e-Invoicing process (EEI) can use this toolkit to sign and time stamp PDF files. See details here .
Desktop Software	Desktop tools for individual signers include DigiStamp IP Protector software or more recently, third party tools like Adobe Acrobat, e-Lock and others. More information here .
Enterprise Server Plug-in	API toolkit for adding time stamps to your internal systems - work flow, data collection, etc. DigiStamp's integration toolkits historically were the primary method of adding time stamps to your existing business applications. Due to wide acceptance of the time stamping standard, this function is supported in more software like BouncyCastle , S/MIME Library (SFL) . DigiStamp does not charge for using its API toolkit. More information below .
Gateway	The gateway allows many employees and internal systems to securely share access to DigiStamp's Internet-based time stamp service. No software or accounting is necessary at individual workstations. The gateway could even be replaced with on-site hardware or a different time stamp vendor, and there would be no impact to existing users. The software version of Gateway is free with a 1-year volume contact here . The cost for each Gateway hardware device is \$1,200 (this is in beta testing today). Additional information below .
Web-Based Service	Core of our operations is the web services approach to providing IETF RFC 3161 time stamps. Prices and account setup are here . An evaluation account allows you to access our test time stamp servers, see: Account Set-Up . More information below .
Secure Time Server	We rarely sell these servers. Because there are two key advantages to using the Internet-based service: cost and ease of access. In a few cases an in-house server may be preferred. More details here